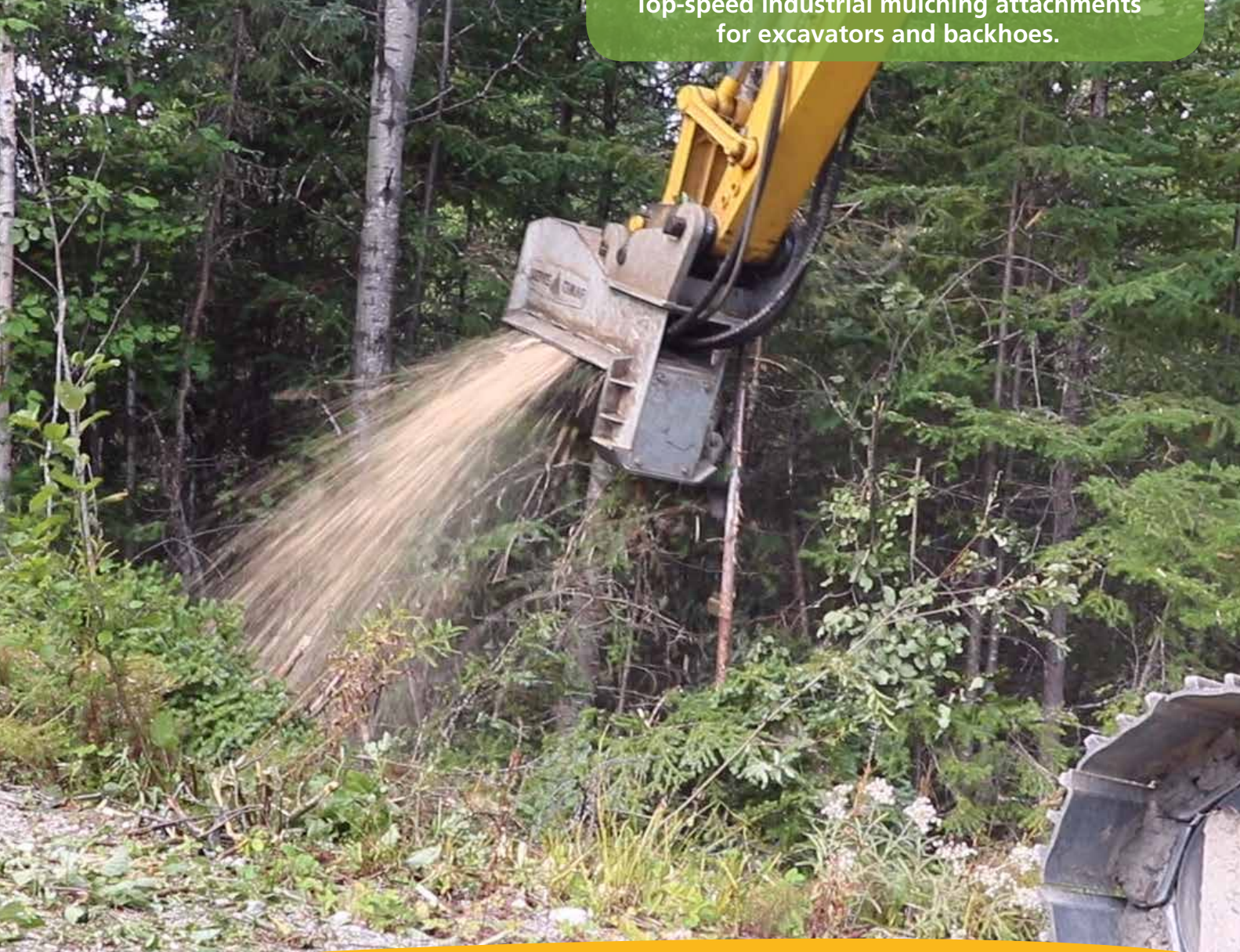




DAH-125D

BOOM-MOUNTED MULCHERS

Reach High Performances in Mulching
Top-speed industrial mulching attachments for excavators and backhoes.



Industrial Land Clearing



Forest Fire Prevention



Road Development and Maintenance



Pipelines Development and Maintenance



Transmission Lines Development and Maintenance

DAH-125D

BOOM-MOUNTED MULCHERS



Rings

Protective rings that limit the size of the bites and considerably reduce risks of breakage on the knife holders.



Motor

Variable displacement, axial-piston motors that minimize overheating and improve re-acceleration.



Drive

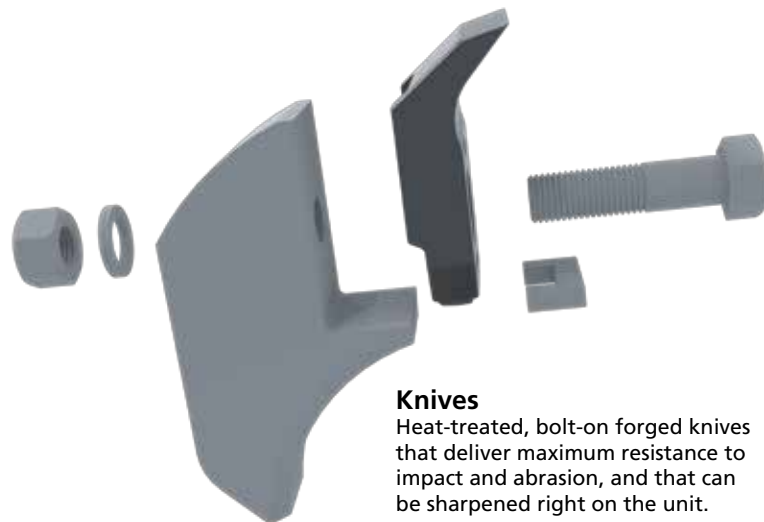
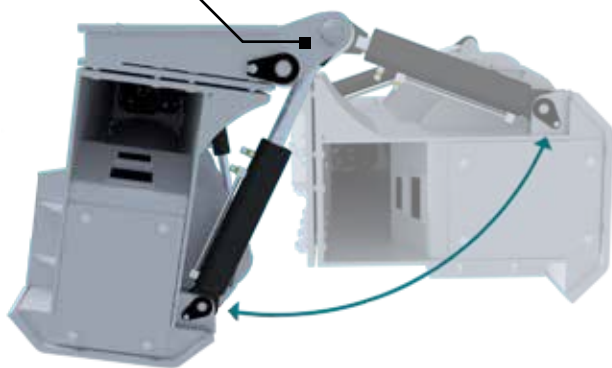
Industrial cogged belt drive system that prevents slippage and reduces effort applied to bearings compared with V-belts, for longer bearing life.

SPECIFICATIONS	DAH-125D
Excavator Size [t (lbs)]	16 - 22 (32000 - 44000)
Recommended minimum carrier power [kW (hp)]	59 (80)
Cutting width [cm (in)]	121 (48)
Cutting Distance from Ground Level [cm (in)]	2 (0.75)
Number of Blades on Rotor	17
Optimal Target Material Diameter [cm (in)]	25 (10)
Exterior Length [cm (in)]	165 (65)
Exterior Height [cm (in)]	96 (38)
Exterior Width [cm (in)]	74 (29)
Rotor Diameter [cm (in)]	46 (18)
Approximate Typical Weight [kg (lbs)]	1005 (2220)

HYDRAULIC SYSTEM	DAH-125D
Variable Displacement Axial Piston Motor [cc]	115
Min. Required Continuous Flow [L/min (gal/min)]	121 (32)
Max. Operating Pressure [bar (psi)]	350 (5000)
Rotating Speed [rpm]	3000
Pressure Line I.D. [# (in)]	#16 (1.00)
Return Line I.D. [# (in)]	#16 (1.00)
Drain Line I.D. [# (in)]	#12 (0.75)

OPTIONS	DAH-125D
Type of Sharpenable Bolt-on Forged Blades	Standard
Tilt System	✓
Bolt-on wear liner	✓
Approximate Weight (All Options) [kg (lbs)]	1320 (2900)

New tilt option offers higher productivity owing to increased aggressiveness.



Knives

Heat-treated, bolt-on forged knives that deliver maximum resistance to impact and abrasion, and that can be sharpened right on the unit.

Easy replacement

Easy-to-replace knives:
A single nut and bolt holds the knife in place.
Replacing worn knives is a snap.

CONTACT US

211 rue Notre-Dame
Roxton Falls QC J0H 1E0
Canada
www.deniscimaf.com

Toll free : 877-279-2300
Phone : 450-548-7007
Fax: 450-548-7008
info@deniscimaf.com

DENIS CIMAFA

Printed in Canada : 2018-02